



Total Organic Carbon Analyser



Qingdao Innova Bio-Meditech Co., Ltd.

No. 1057 Jinshui Road, 266121, Qingdao, China

Tel.: +86 532 8789 0634

Email: info@innobiomed.com

Website: www.innovabiomed.com



INTOC-2 / INTOC-3

INTOC-2 / INTOC-3 is our new launched total organic carbon analyzer that uses non-dispersive infrared (NDIR) detection to measure parameters as TOC, NPOC, TC, and TIC easily. TOC (Total Organic Carbon), which directly shows the total organic content, is regarded as a key factor to evaluate pollution potentials of organic compound in water.

We have 2 models TOC: INTOC-2 (Catalytic high temperature combustion) and INTOC-3 (Wet chemical oxidation by UV). INTOC-2 is ideal for quality control of drinking water, industrial water, sewage and waste water. INTOC-3 is ideal for pharmaceutical application like cleaning validation, water for injection.

Features

- * TOC detector with 24 bits data solution extends monitoring range. Controlling system with 32bin processing technology greatly improves performance.
- * Signal management system with our own patent law which has great advantages of online setting, real-time monitoring, self diagnosis and flow rate control to ensure high performance and safe operation.
- * Weak current system design also ensures operation safety.
- * Compact design for TOC saves bench top space and also makes TOC an ideal choice for laboratory.
- * Automatic leak check system to avoid operation mistakes and improve instrument performance, so as to ensure operation safety and instrument's safety.
- * Flow rate controlling system to avoid any effect caused by flow rate fluctuation which ensures accurate data.

Technical Specification

Model	INTOC-2
Detector	NDIR
Parameters	TC/TIC/TOC/NPOC
Method	High Temperature Combustion
Operation	PC control
Application	Liquid Sample, Gas Sample
Gas Requirement	Oxygen/Nitrogen ≥ 99.995%
Measurement Range	0-30000mg/l (ppm)
Detection Limit	50 μg /l (ppb)
Repeatability	3%
Maximum Salinity	85g/l
Power	AC220V , 50Hz/AC110V,60Hz,200w
Dimension	430*455*440mm

Technical Specification

Model	INTOC-3
Detector	NDIR
Parameters	TC/TIC/TOC/NPOC
Method	Wet chemical oxidation by UV
Operation	PC control
Application	Liquid Sample, Gas Sample,
Gas Requirement	Oxygen ≥ 99.995%
Measurement Range	0-10000mg/l (ppm)
Detection Limit	5 μg /l (ppb)
Repeatability	3%
Maximum Salinity	85g/l
Power	AC220V , 50Hz/AC110V,60Hz,200w
Size	430*455*440mm

**INTOC-5
ANALYZER**



**INTOC-7
ANALYZER(OHNE)**



Unlike INTOC-2 and INTOC-3, INTOC-15 and INTOC-17 are equipped with direct conductometric detection method. INTOC-15 is off-line while INTOC-17 integrated on-line sampling while enables easy and quick sample introduction. This series TOC is ideal for application in microelectronics water, purified water, water for injection, cleaning validation and etc.

Features

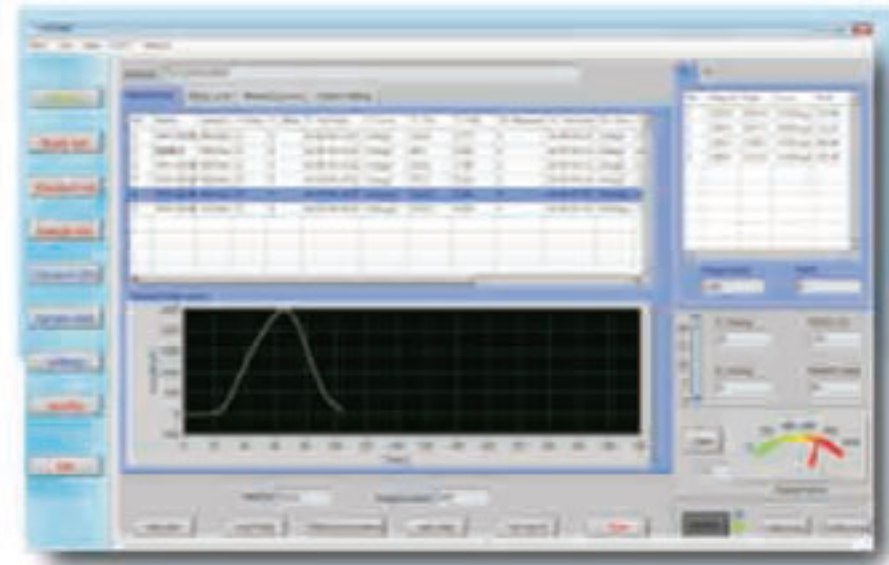
- * Automatic sample introduction with enter of trace sample, we can control the value of the trace sample. No contamination will occur during testing which will be harmful to human being and environment.
- * It adopts UV Catalytic oxidation during which there is no need to add acid, gas or catalyzer with low lost of routine maintenance cost.
- * 7 inches touch screen with operation panel, which is easy to operate and maintain.
- * The system is set with password for protection which is in compliance with FDA-21 CFR Part 11 Requirements. Also, it is in compliance with USP32-643 requirements.
- * Automatic alarm when the value is beyond maximum setting value to protect the instrument and to avoid any incorrect operation.
- * Auto sampler is optional which can be used for testing various different samples without person.
- * Special designed for testing water less than 1.5ppm. Online and office testing function can be easily switched.
- * 8GB Mass storage memory which does not restrict date and time.
- * Less than 3 minutes for each analysis.
- * Clear historical records which is traceable according to analysis date.
- * Data for specific whole day can be derived and saved to USB directly.
- * Equipped with Bluetooth printer which is easy to operate and print quickly.
- * Modular design ensures quick installation and easy maintenance.
- * Optional online monitoring device meets different requirements.

Technical Specification

Model	INTOC-5	INTOC-7
Detector Range	0.001-1.5mg/L (ppm)	0.001-1.500mg/L (ppm)
Detection limit	1ppb	1ppb
Max Tolerance	±5%	±5%
Analysis time	3min	3min
Response time	within 10min	within 10min
Sample temperature	1-95°C	1-95°C
Environment temperature	10-40°C with temperature change ±5°C/d	10-40°C with temperature change ±5°C/d
Sample flow speed	3ml/min	3ml/min
Relative humidity	≤85%	≤85%
Drifting	±5%	±5%
Repeatability Tolerance	≤3%	≤3%
Drifting	±5%	±5%
Power	220V±10%	220V±10%
Frequency	50Hz+1Hz	50Hz+1Hz
Power	100W	100W
Dimension	440*220*300mm	440*220*300mm



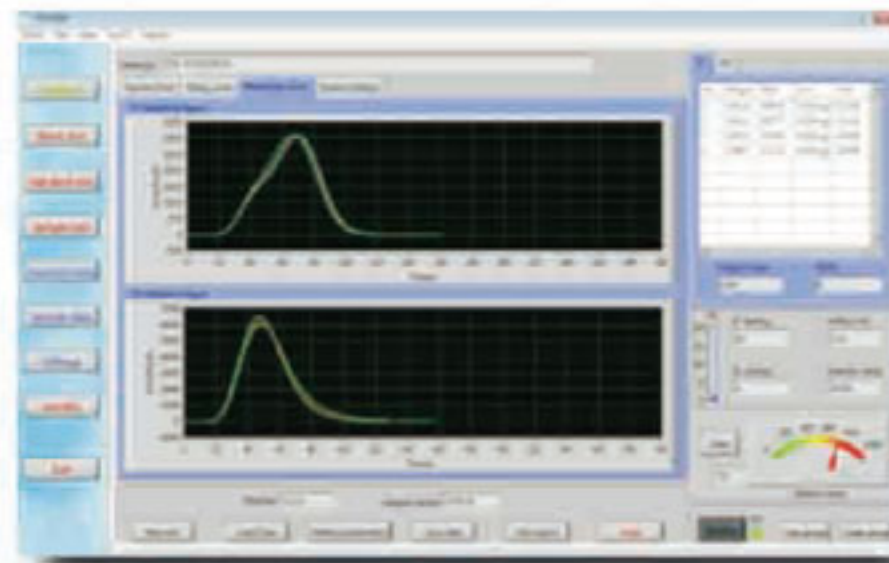
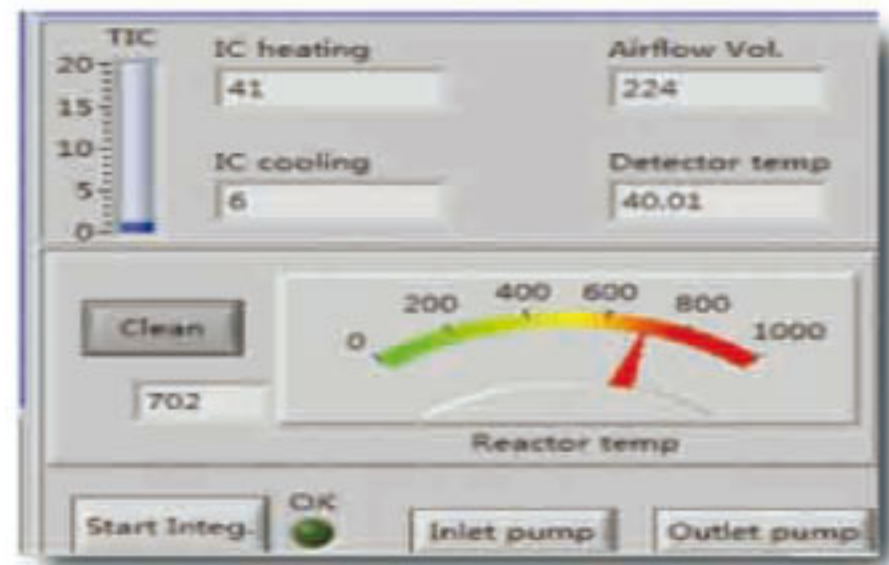
TOC software (for INTOC-2 & INTOC-3)



- Sample measurement processing monitoring**
1. Set different name, concentration and sample volume
 2. Real-time sample reaction
- On-line AVG and RSD calculation of testing results

Display and monitoring of sampling

1. Sampling volume real-time monitoring
2. Automatic sample draining monitoring
3. Real time display and monitoring for Heating, cooling and furnace temperature
4. Auto switch of sampling and draining
5. Acidification operation by peristaltic pumps

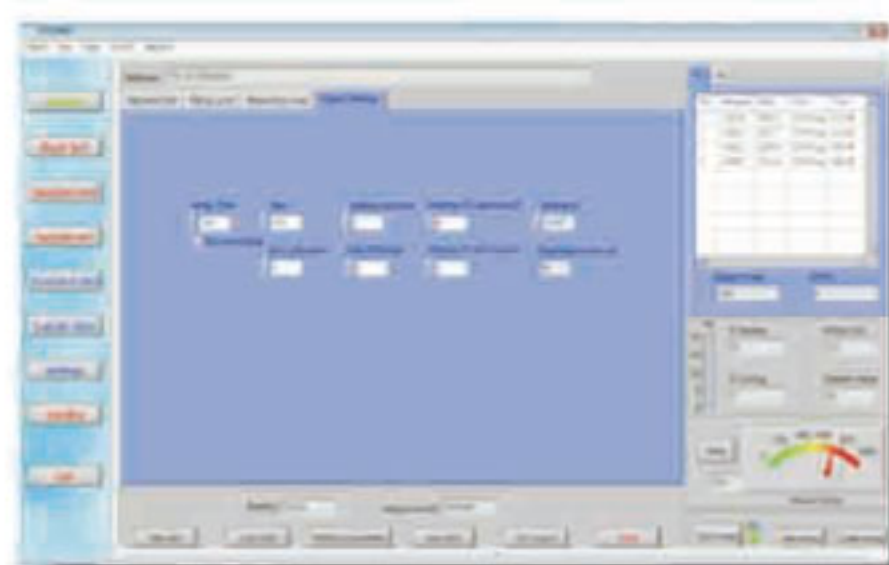


Scanning Curves

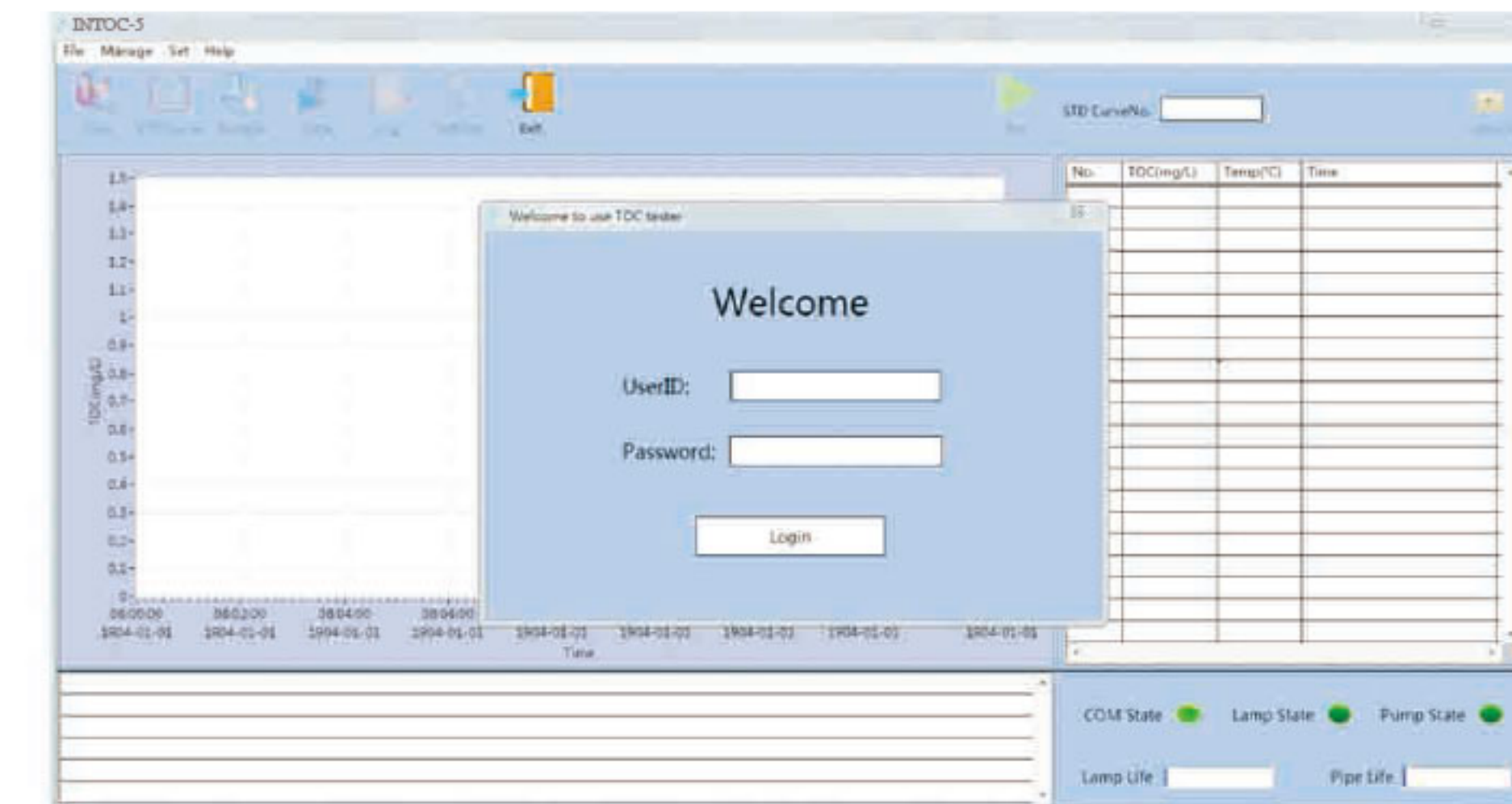
1. Samples curves shows in the same coordinate system for easy reading of repeatability

Parameter Setting Interface

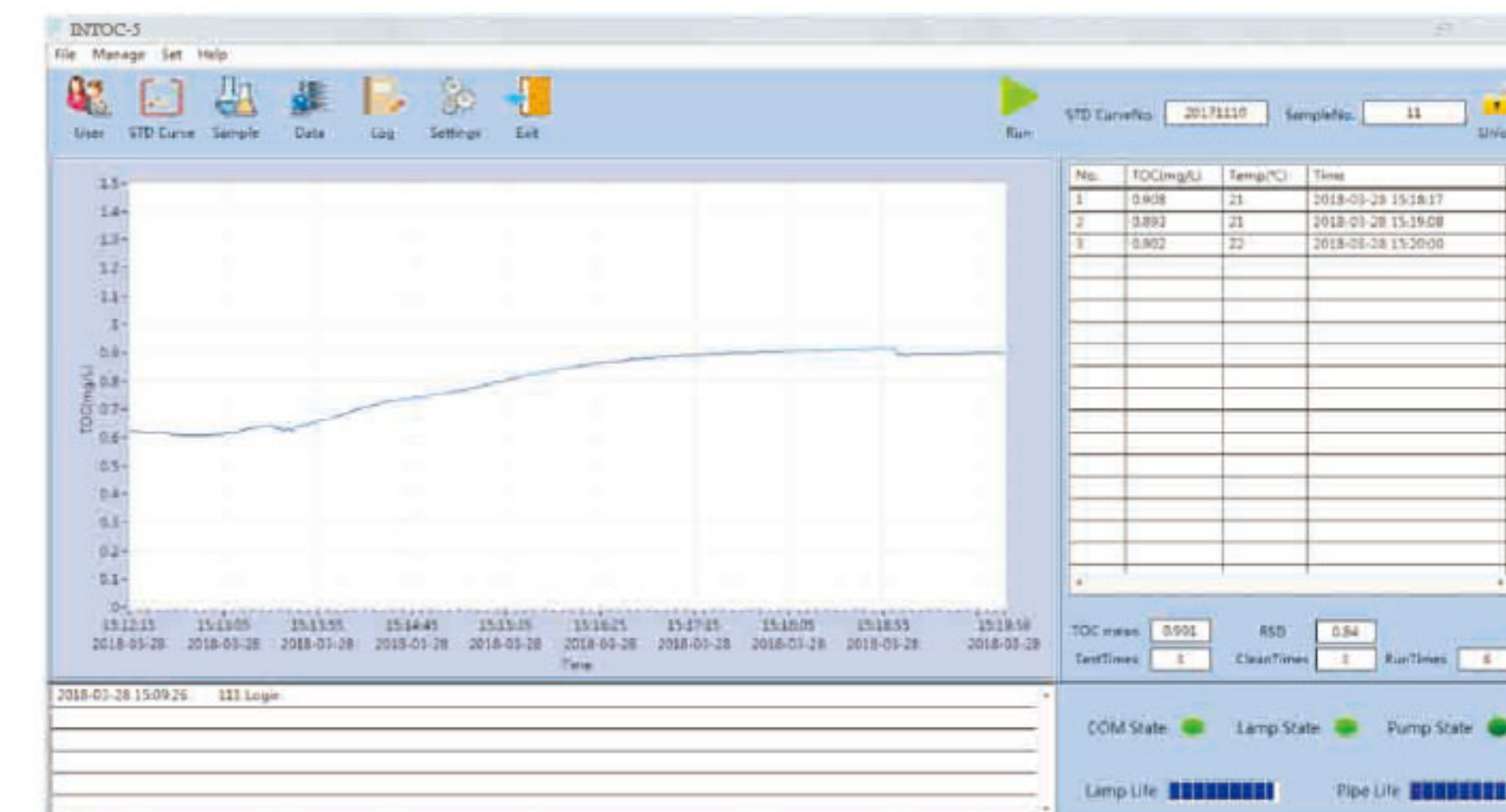
1. Settings for heating and cooling
2. Temperature; acidification sampling and draining time; Basic setting for pump, valve and temperature Control
3. Press "TC" clean, the system will automatically start drain-add sodium persulfate draining sampling draining



TOC software (for INTOC-5 / INTOC-7)

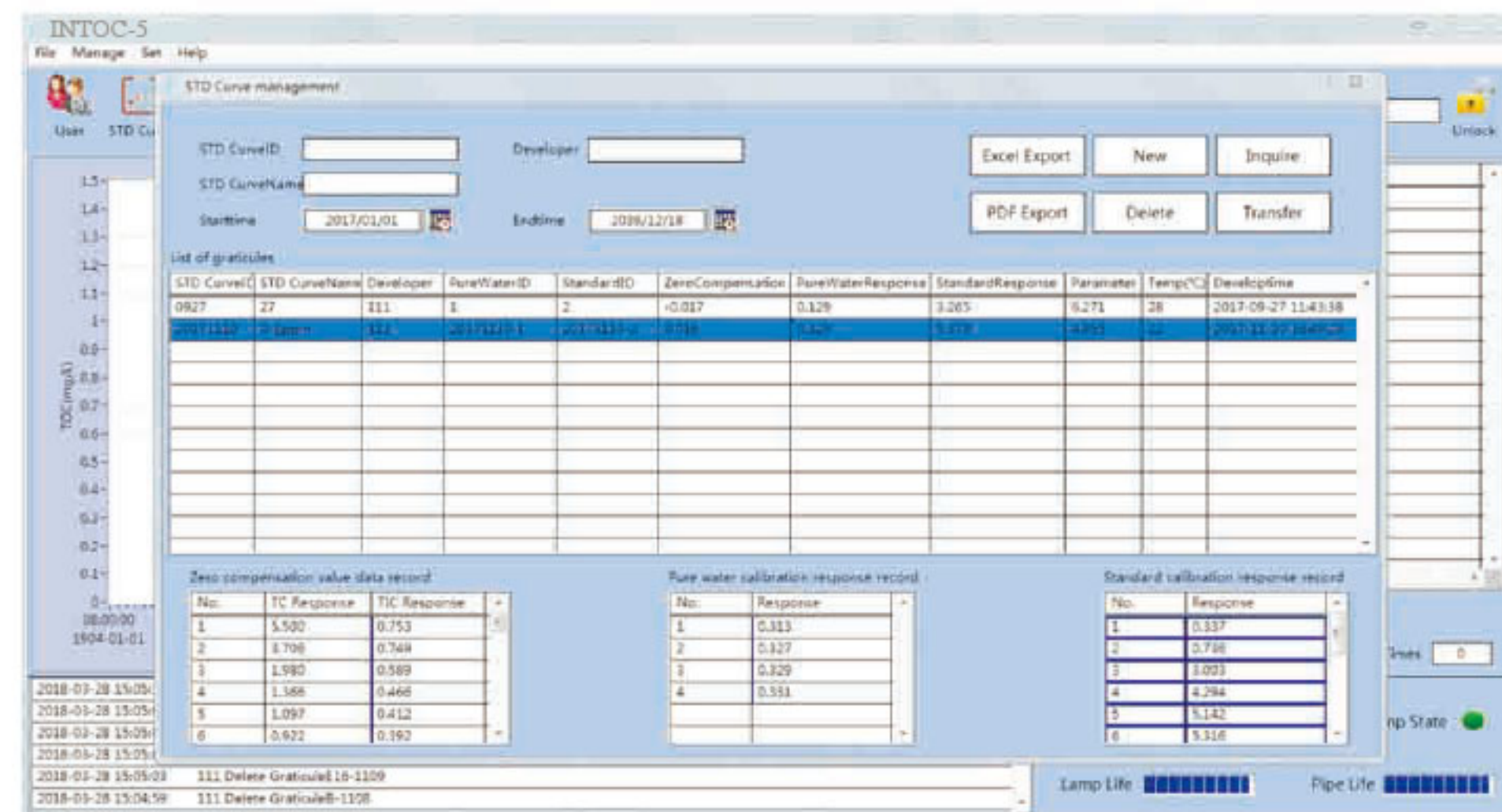


Log in with User ID and password.

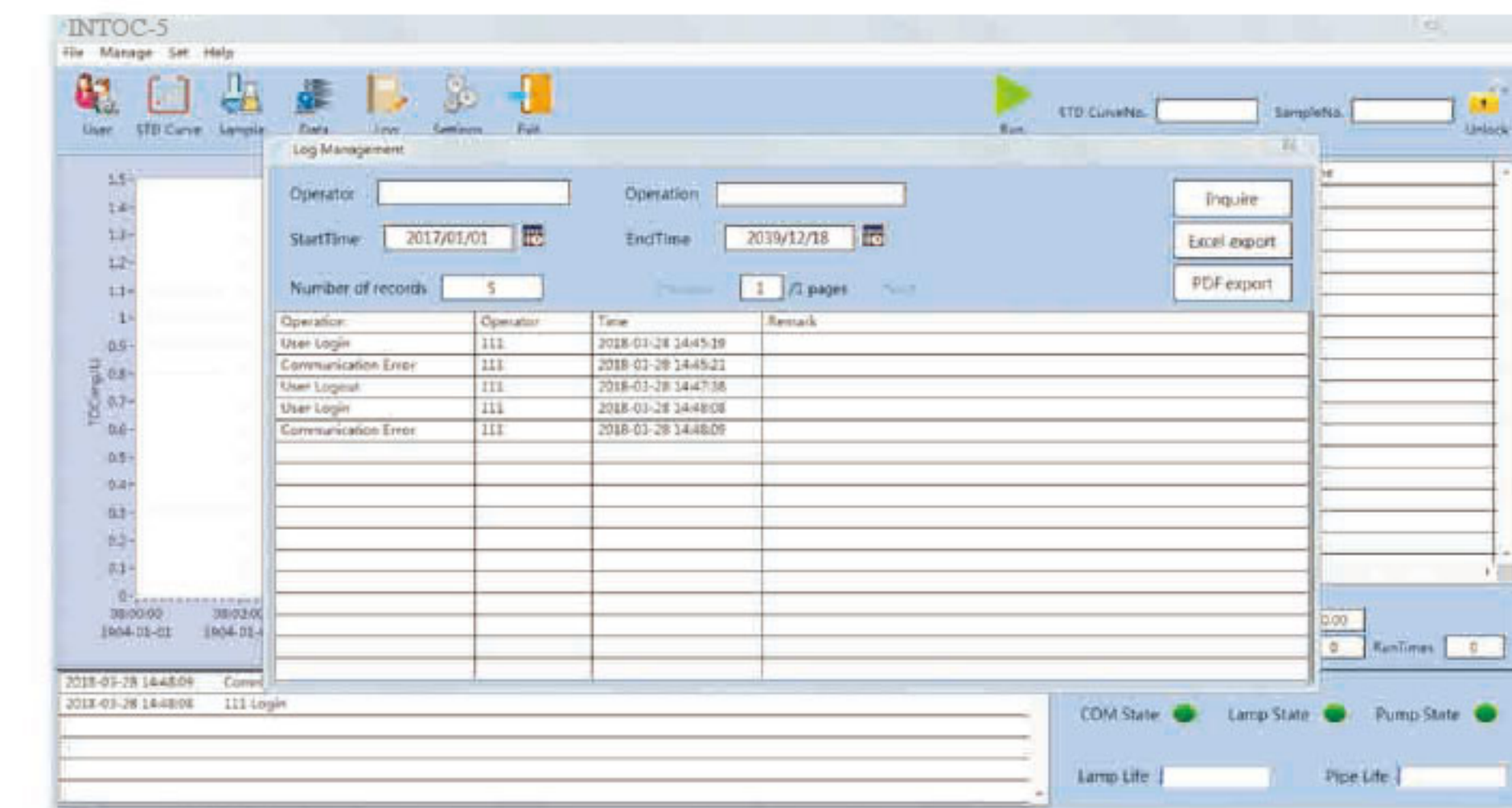


Main interface for software shows running status and all data. User can switch to other functions on this interface.

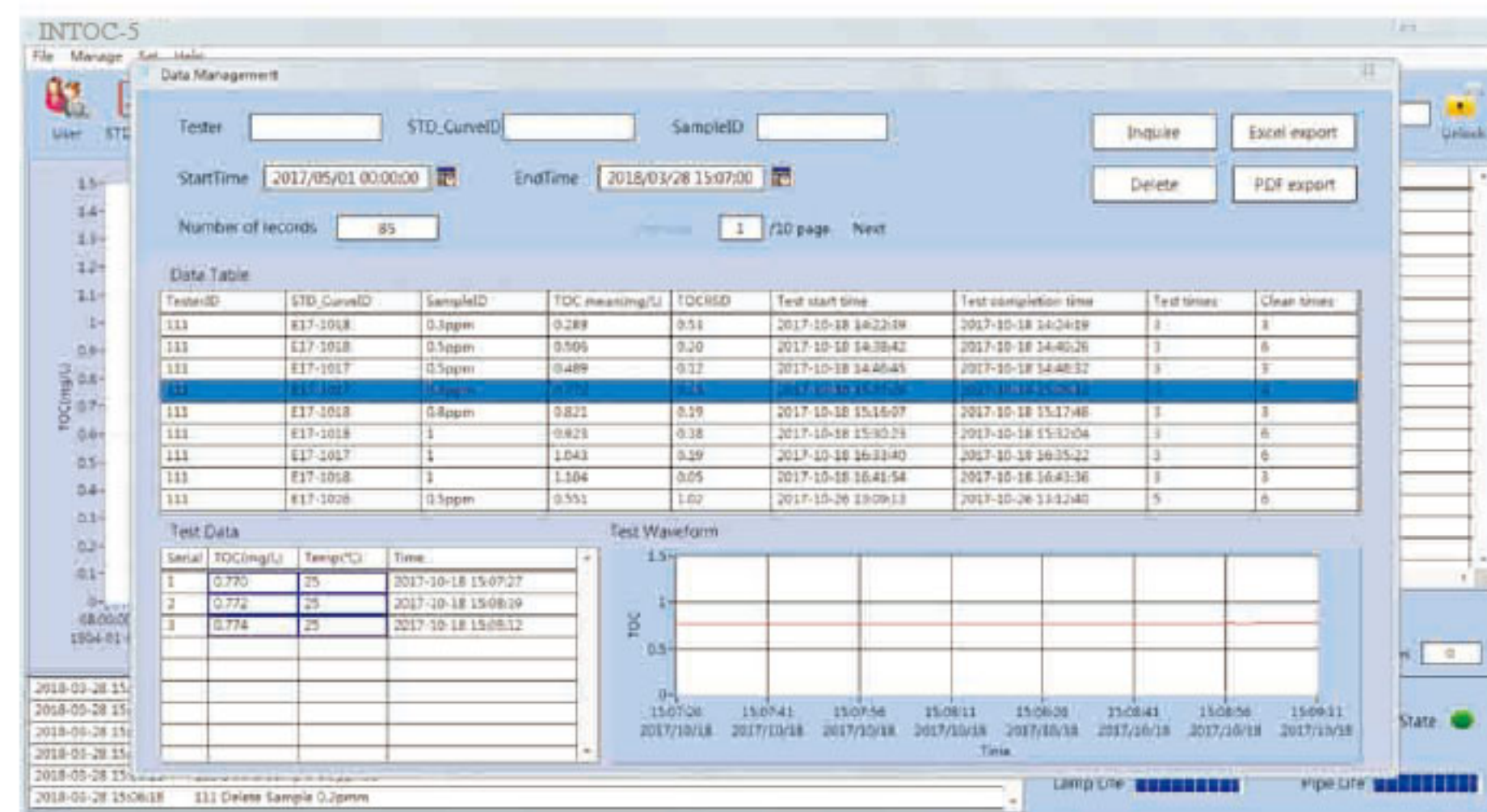
TOC software (for INTOC-5 / INTOC-7)



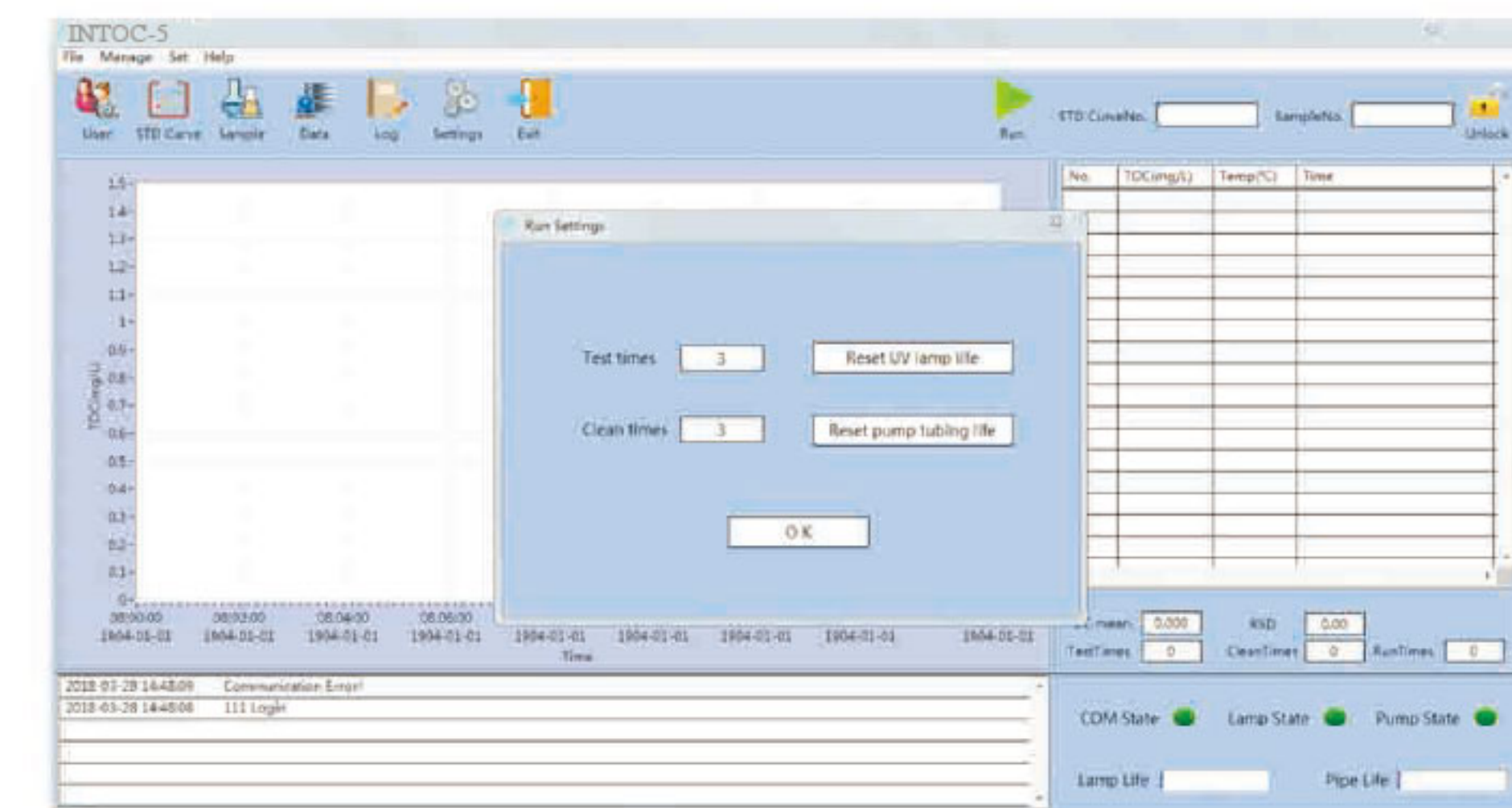
User can choose and check saved curves on this interface.



Record interface: Users can check previous record on this interface.



Sample interface: User can check previous analysis data on this interface.



Running interface: User can set test times and clean times. Also they can reset UV lamp and pump tubing on this interface.