

INNOVA AIR SHOWER



Qingdao Innova Bio-Meditech Co., Ltd.

Add:1212, Building #5, No.176 JuFeng Road,
Licang district, Qingdao,China

Tel.: +86 532 8789 0634

Email:info@innobiomed.com

Website: www.innovabiomed.com

Company Profile

Innova Bio-Meditech is one of the professional solution provider of of laboratory and medical devices. Firmly committed to our mission of “sharing innovative bio-meditech solutions with the world”, we are dedicated to innovation in the fields of Biology Project, Life Science, Pharmacy Industry and Medical Treatment.



Innova Bio-Meditech possesses a sound distribution and service network with business partners in North and Latin America, Europe, Africa and Asia-Pacific etc. We have built up a well established R&D, manufacture network with 3 centers in Beijing, Qingdao, and Shanghai. Inspired by the needs of our customers,

we adopt advanced technologies and transform them into accessible innovation. This means constant effort and research, in order to more fully understand the developments of the market, INNOVA produce constantly upgraded product ranges by adding new products year after year.

Business Mentality

Enterprise Spirit:

Keep sincerity and pursue excellence

Service Objective:

Customer Satisfaction, Employee Satisfaction, Shareholder Satisfaction

Air Shower Introduction

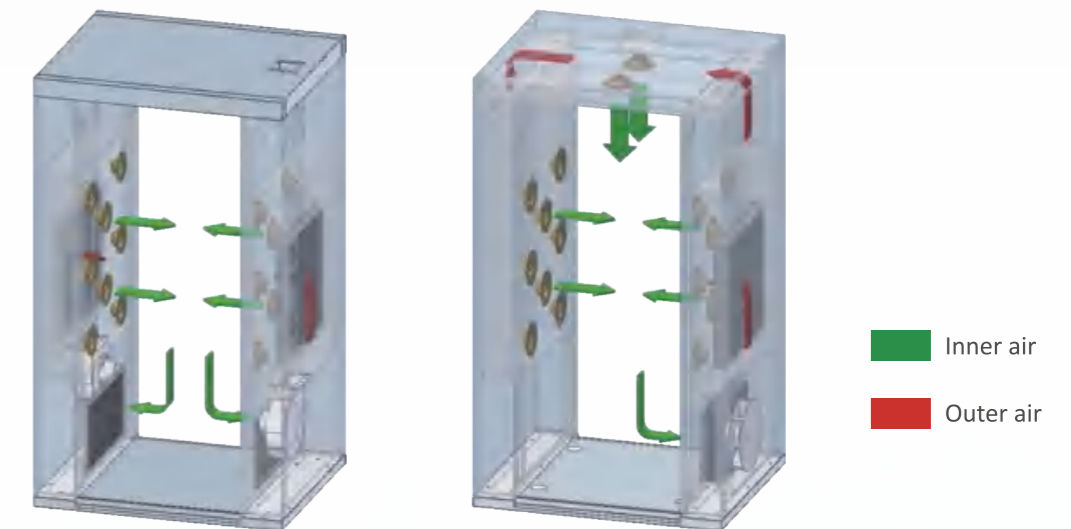
Air Shower is supporting equipment for clean room and workshop. It can remove the dust adhering of the operator/goods and block the unclean air into the working area as an air lock.

Air Shower can be divided into two kinds for different purpose, AS for operator and AS for goods. It has various modes of showering from single-side, double-side or top. It is also equipped with various kinds of doors in manual, in auto or shutter etc.

SAT specialized in developing, designing and producing air showers more than 30 years. We have imported and assimilated technology from Japan. This guarantees SAT's products' structure, material and properties reaching the international advanced level. There are five patents and Know-How in our products, such as PULSE JET SHOWERING, AIR REVOLVING SHOWERING and ULTRA-THIN HIGH-SPEED BLOWER etc. They have brought a revolution to Air Shower.

It can be widely used in electronics, precision instrument, food, pharmacy and scientific research fields.

Air Flow Pattern

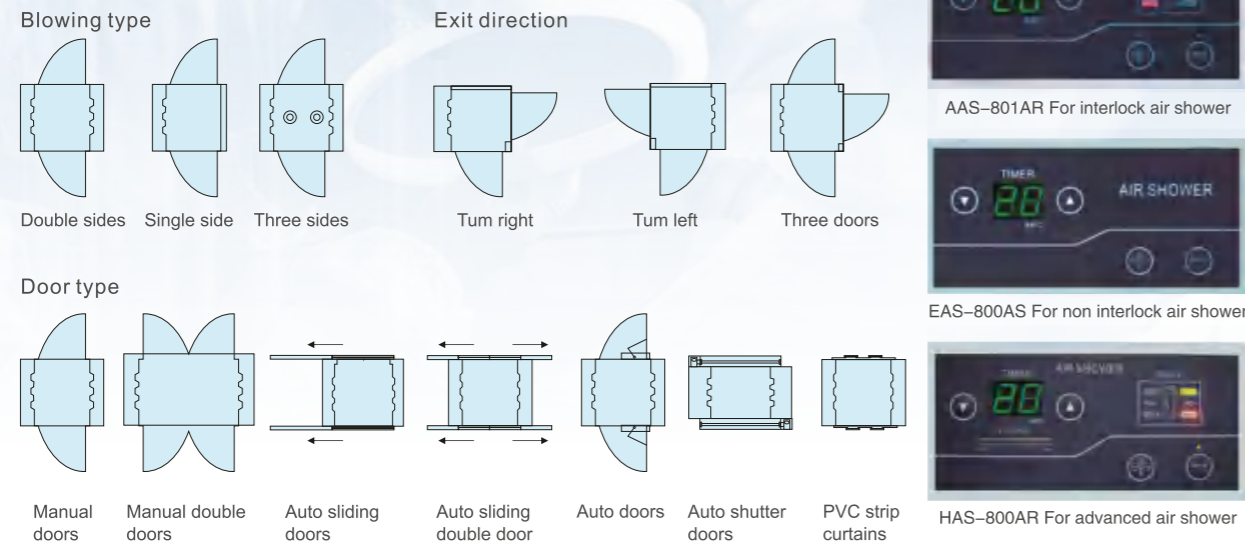


· Top nozzles (optional)

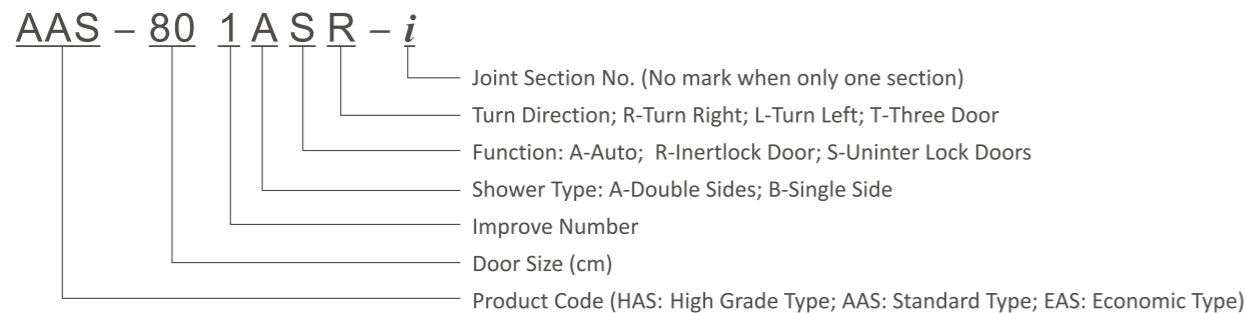
- Air stream through the pre-filters and low noise centrifugal blowers towards the air shower chamber.
- Air is ejected by the blowers through HEPA filters and nozzles to remove the dust adhering to the operator and goods.
- The air is continuously filtered and recirculated. The air shower is a self-contained device and does not exchange air with the environment it is placed in.

Diagram of Main Kinds

DIAGRAM OF MAIN MODEL

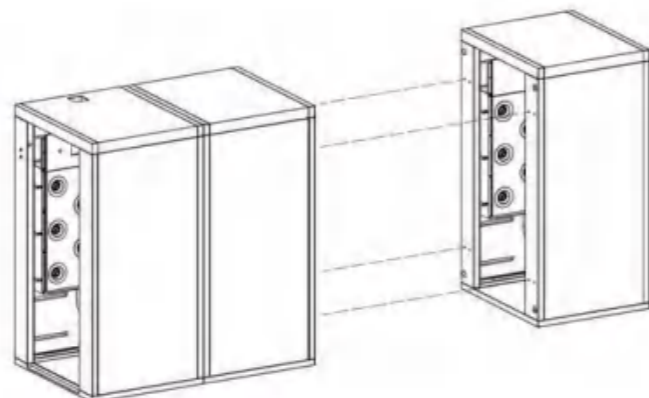


Description of Model



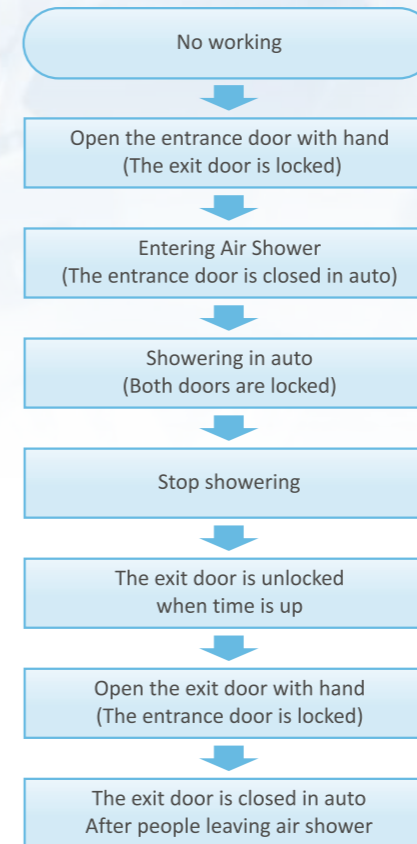
Module Form

Standard module design make easier to assemble and maintain at customer site.

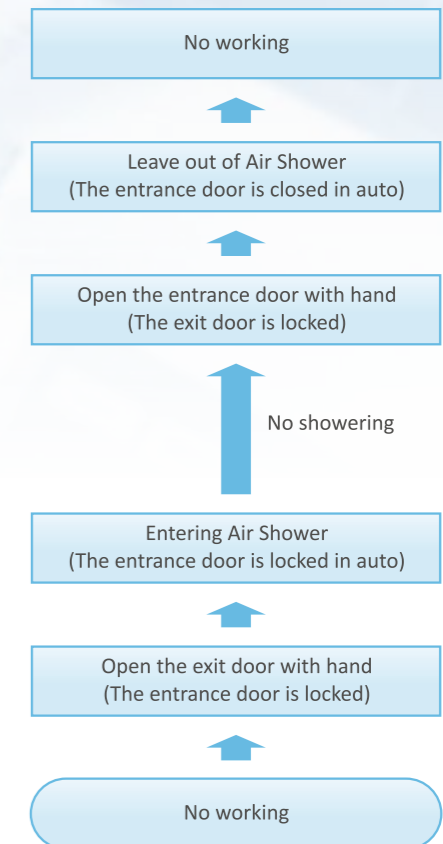


Working Process

TO ENTER CLEAN AREA

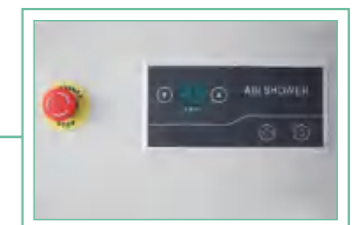


TO LEAVE CLEAN AREA



Features

- High velocity shower jets in excess of 25m/s ensure efficient to remove particulate matter.
- Specific ultra-thin air shower chamber and blower, rotatable embed stainless steel nozzles highly increasing space utilization and air showering effectiveness.
- With several sets of operational program and flexible to invoke.
- Micro touch operation panel and intelligent human conversation interface can monitor the air shower running status in real time.
- Standard module designing make it's easier to assemble and maintain at customer site.
- Customized according to user's requirement and site condition.



Component

Standard Air Shower

Control Panel

- With several sets of operational program and flexible to invoke. Operator can set air showering time by self.
- Micro touch operation panel and intelligent human conversation interface can monitor the air shower running status in real time.

Nozzle

- Rotatable embed stainless steel nozzles highly increasing space utilization and air showering effectiveness. The top nozzles make it efficient to remove the dust on operator's head and shoulder.

Fan

- Adopting dedicated ultra-thin high velocity blower which developed by ATJ to ensure stable air velocity and low noise.
- According to user's requirement, AS can be fitted with brushless DC motor, less power consumption and more efficient. 40% less energy than traditional AC motor air shower.

Filters

- Adopting double-deck filter technology, air enters through pre-filter to filter large particle, then goes through H13 HEPA filters which are 99.99% efficient against particles of 0.3 microns.

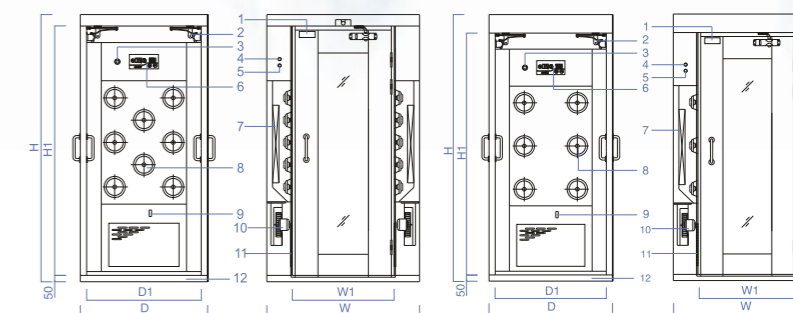
Material

- The body of Standard type is high grade steel with ivory color static powder coating, stainless steel floor. The customer can choose material according to their requirement. (Internal stainless steel or all stainless steel)



| Feature | AAS-801 | AAS-802 | EAS-800 | HAS-800 |
|---------------------------------|---------|---------|---------|---------|
| Ultra-thin blower | ● | ● | ● | ● |
| Stainless steel nozzles | ● | ● | ● | ● |
| Brushless DC motor | | ● | | ● |
| Top nozzles | ○ | ○ | | ● |
| LED light | ● | ● | ● | ● |
| Pulse jet showering | | | | ● |
| Mirror (mirror stainless steel) | | ○ | | |

● Standard ○ Optional



- | | | | |
|---------------------|---------------------|-------------------------|----------------|
| 1. Magnetic Lock | 4. Unlocking Button | 7. HEPA Filter | 10. Fan Unit |
| 2. Closer | 5. Pilot Light | 8. SUS Nozzel | 11. Pre-filter |
| 3. Emergency Button | 6. Control Panel | 9. Photoelectric Switch | 12. Floor |

Specification

| Model | AAS-801AR(S) | AAS-802AR | EAS-800AR(S) | HAS-800AR |
|-----------------------------------|---|-----------|---------------------------------------|---------------------------------------|
| Filter Efficiency | ≥99.99% (@≥0.3μm) | | | |
| Air Velocity | ≥25 m/s (4920 fpm) | | ≥20 m/s (3936 fpm) | 23~28 m/s Pulse (4526~5510 fpm) |
| Showering Time | 0~99 s (Adjustable) | | | |
| Num. of Nozzle | 16 | | 12 | 26 |
| Power Supply | AC380V, 3Φ, 50Hz | | | |
| Rated Power | 1.8(1.6) KW | 1.1 KW | 1.6(1.3) KW | 2.3 KW |
| Body | High grade steel with ivory color static powder coating | | | |
| Floor | High grade steel and coated with SUS | | | |
| Door | Aluminum alloy with tempered glass | | | |
| Overall Dim. (WxDxH) | 1200x1000x2100 mm (47.2"x39.4"x82.7") | | 1150x1000x2160 mm (45.3"x39.4"x85.0") | 1200x1000x2160 mm (47.2"x39.4"x85.0") |
| Dim. of Showering Area (W1xD1xH1) | 800x900x1960 mm (31.5"x35.4"x77.2") | | | |
| Weight | 300 kg | | 280 kg | 350 kg |

Customized Air Shower

| | | |
|----------|-------------------|---|
| Optional | Materials of Body | Inside SUS304, All SUS304 |
| | Door Type | Auto, Manual(double, single), Shutter door, Revolution door |
| | Others | Size, Direction of opening, Special nozzle, .etc |



Double-Door



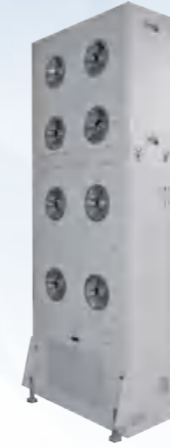
Auto-Door



Shutter-Door

| Model | Double-Door AS | Auto-Door AS | Shutter-Door AS |
|------------------------|--|--|---|
| Filter Efficiency | ≥99.99% (@≥0.3μm) | | |
| Air Velocity | ≥25 m/s (4920 fpm) | | |
| Showering Time | 0~99 s (Adjustable) | | |
| Num. of Nozzle | 16xi | | |
| Power Supply | AC380V, 3Φ, 50Hz | | |
| Rated Power | 1.8+1.5x(i-1) KW | 2.5+1.5x(i-1) KW | 5+1.5x(i-1) KW |
| Body | High grade steel with ivory color static powder coating | | |
| Floor | None | | |
| Overall Dim. (WxDxH) | (W1x2+400)x(D1+100)x(H1+90) mm (W1x2+15.7")x(D1+3.9")x(H1+3.5)" | (W1x2+300)x(D1+400)x(H1+250) mm (W1x2+11.8")x(D1+15.7")x(H1+9.8)" | (W1+800)x(D1+400)x(H1+500) mm (W1x2+31.5")x(D1+15.7")x(H1+19.7)" |
| Dim. of Showering Area | W1xD1xH1 | | |

Showering Unit



XAS-2UN



SS-AS-01(-02)

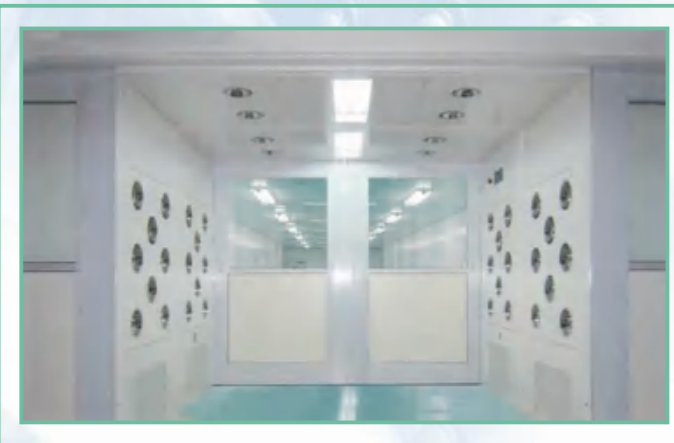


AAC-20250C

| Model | XAS-2UN | SS-AS-01(-02) |
|----------------------|---|--|
| Filter Efficiency | ≥99.99% (@≥0.3μm) | |
| Air Velocity | ≥25 m/s (4920 fpm) | |
| Num. of Nozzle | 8 | |
| Power Supply | AC220V, 1Φ, 50Hz | |
| Rated Power | 0.7 KW | 1 KW |
| Body | High grade steel with ivory color static powder coating | High grade steel with ivory color static powder coating Anti-static curtain |
| Overall Dim. (WxDxH) | 700x300x1865 mm (27.6"x11.8"x73.4") | 1040x1000x2000 mm (40.9"x39.4"x78.7") |
| Curtain | None | SS-AS-02: Colorless transparent anti-static curtain |

| Model | AAC-20250C |
|--------------------------------|---|
| Insectproof Efficiency | ~95% |
| Air Volume | ~260 m³/min (~9182cfm) |
| Air Velocity | High air velocity side: 20~24 m/s (3936~4723 fpm) Low air velocity side: 13~15 m/s (2558~2952 fpm) |
| Power Supply | AC380V, 3Φ, 50Hz |
| Rated Power | 4.5KW |
| Body | High grade steel with ivory color static powder coating |
| Overall Dim. (WxDxH) | 3000x850x2600 mm (118"x33.5"x102.4") |
| Dim. of Showering Area (WxDxH) | 2000x500x2500 mm (78.7"x19.7"x98.4") |

Application Scene



Production Scene



Product Series



- Biosafety Cabinet
- Clean Bench
- Air Isolation Booth
- Air Partition Booth
- Battery Clean wagon
- Pass Box
- Clean Hand Wash & Dryer
- Air Shower
- Sampling Room
- Isolation System
- Air Filter Unit
- Mini Air Cleaner Unit